

## How to... Find your Legislators

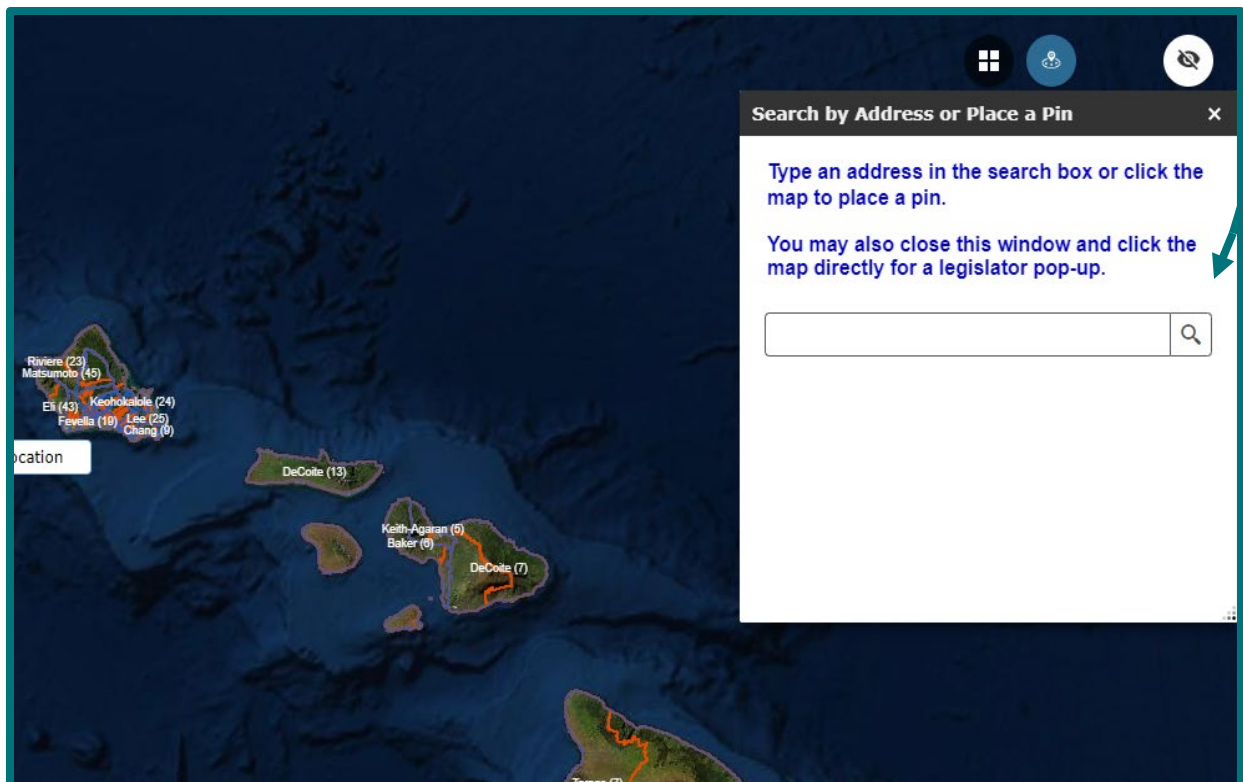
Not sure what districts you're in or who represents you?

The Legislature's website makes it easy for you to find your Senator and Representative.

1. Go to the [Legislature's website \(capitol.hawaii.gov\)](http://capitol.hawaii.gov).
2. Click on the "Legislature" tab (upper left) and select "Find Your Legislator" from the drop-down menu.

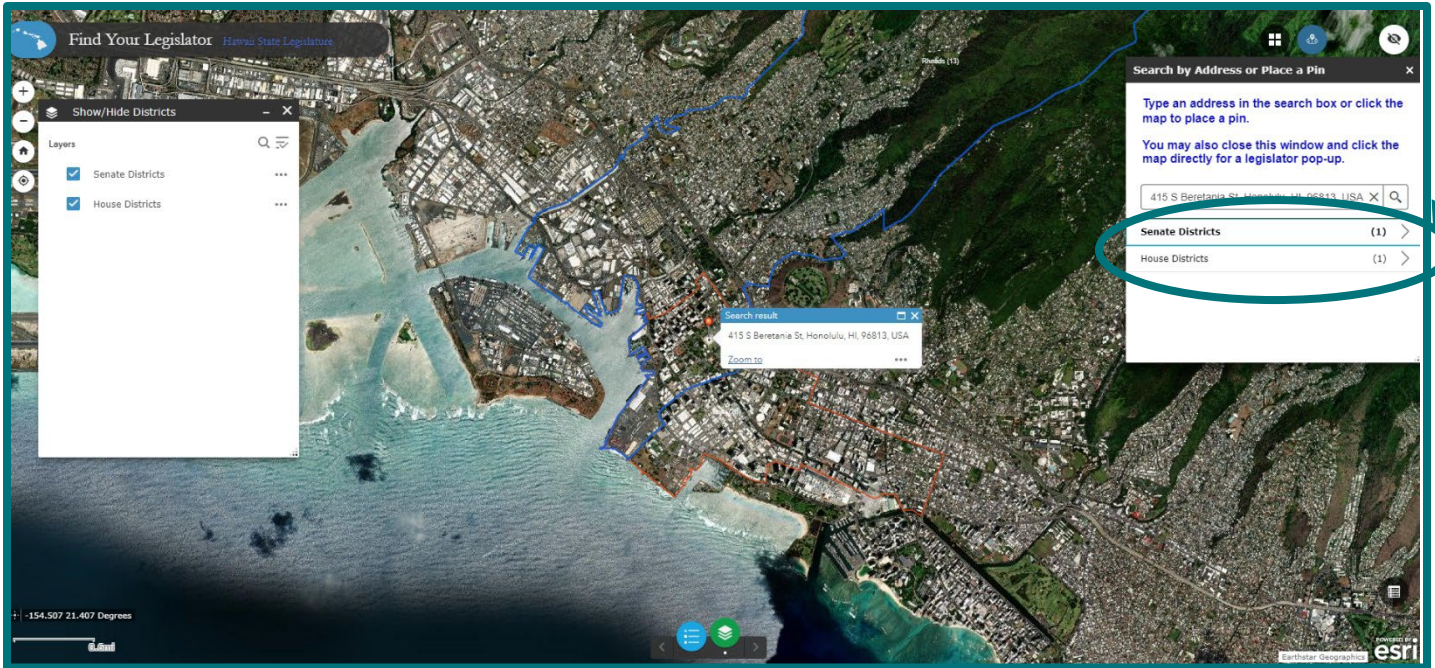


3. When the "Find your Legislator" page opens, **type your street address into the box on the right.** As you type, complete addresses may be suggested – select the correct one or use the "Enter" key on your keyboard to submit your typed address. (Note: You can also zoom in and select a place on the map and find your legislators that way.)

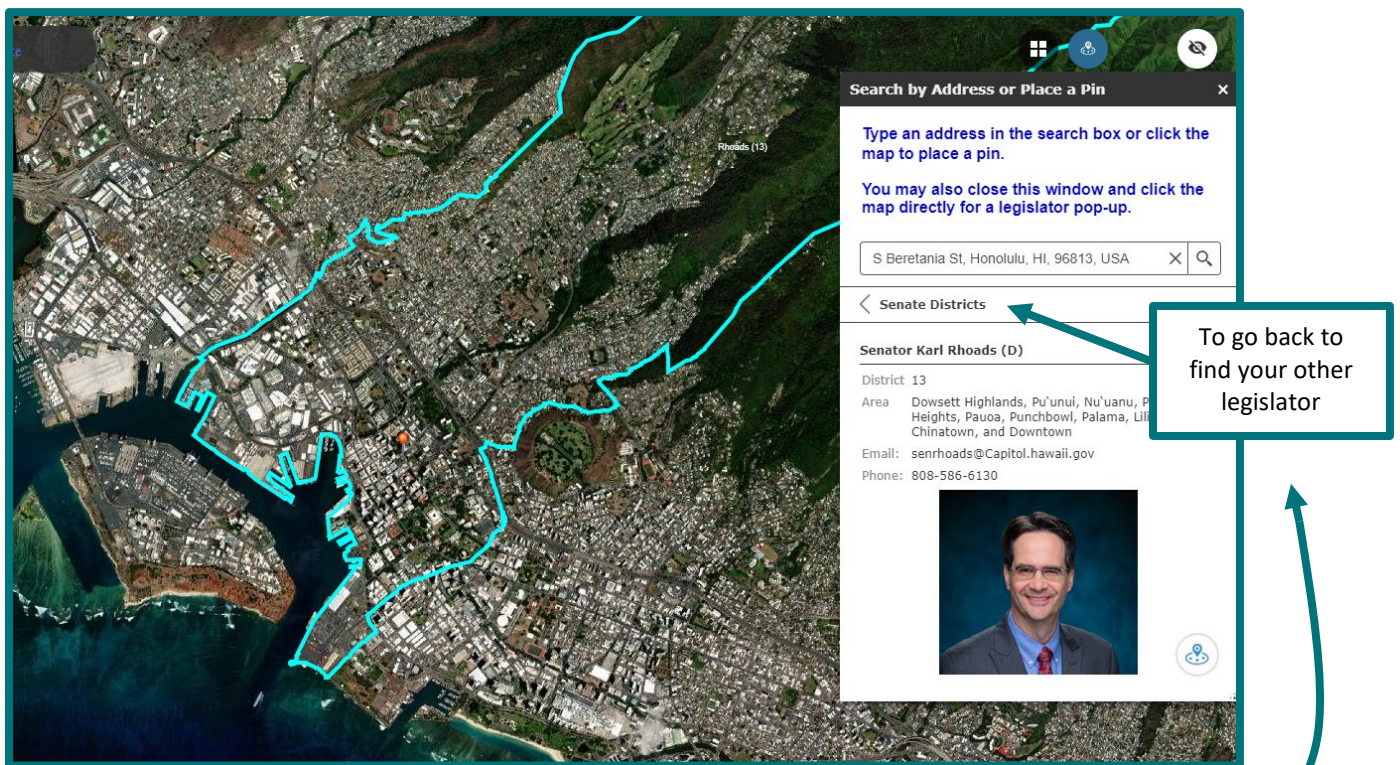


(continued on next page)

4. A map with an outline of your House district (in red) and Senate district (in blue) appears. **The box on the right now provides links to your legislators' information – labeled "Senate Districts (1)" and "House Districts (1)."**



5. Click on the **"Senate Districts (1)"** or **"House Districts (1)"** link to find your legislator. You'll find contact information, district information, and a picture of the legislator.



6. To find your other legislator, navigate back to the results by clicking on the link with the back arrow ("**< Senate Districts,**" for example). If you want to find out more about your legislators, you can find their webpages on the Legislature's website: Go to the "Participate" tab and select "Contact Legislators" from the drop-down menu. Then choose either "Contact Senators" or "Contact Representatives." Click on the legislator you're interested in, and you'll find all sorts of helpful information.